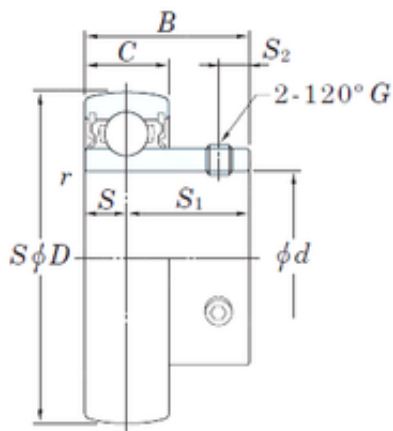




NEI Manufacturing Bearing LTD.



31.75 mm x 72 mm x 32 mm KOYO SB207-20 deep groove ball bearings

Bearing No. SB207-20

Size	31.75x72x32 mm
Bore Diameter	31.75 mm
Outer Diameter	72 mm
Width	32 mm
d	31.75 mm
D	72 mm
B	32 mm
C	17 mm
S1	23,5 mm
r min.	1,1 mm
S	8,5 mm
S2	6 mm
Thread (G) - 1/4-28UNF	1/428UNF
Weight	0,42 Kg
Basic dynamic load rating (C)	25,7 kN
Basic static load rating (C0)	15,4 kN
Category	Bearings
Inventory	0.0
Manufacturer Name	KOYO
Minimum Buy Quantity	N/A
Weight / Kilogram	0
Product Group	M06110

SB207-20 Bearing 2D drawings and 3D CAD models